

Axel Menu

Publishing Applications and Securing the Desktop for Windows TSE

The reproduction of this material, in part or whole, is strictly prohibited. For additional information, please contact:

AXEL
14 Avenue of the Québec
Bât. K2 - BP 728
91962 Courtabœuf cedex - FRANCE
Tel.: 33 1.69.28.27.27
Fax: 33 1.69.28.82.04
Email: info@axel.com

Table of Contents

1 - INTRODUCTION	1
1.1 - PRINCIPLE FUNCTIONS.....	2
1.2 - USER ENVIRONMENT	2
1.3 - LAUNCHING AXMENU	3
1.4 - WORKING WITH AXMENU.....	4
2 - INSTALLATION / REMOVAL OF AXMENU	5
2.1 - PREREQUISITS.....	6
2.2 - UPDATES.....	6
2.3 - INSTALLATION	6
2.4 - REMOVAL	10
3 - CONFIGURING AXMENU	11
3.1 - CHOOSING LANGUAGE	12
3.2 - ACCESSING THE CONFIGURATOR	12
3.2.1 - <i>Initial Setup</i>	12
3.2.2 - <i>Subsequent Setup</i>	13
3.2.3 - <i>Technical Point</i>	13
3.3 - THE CONFIGURATOR	13
3.3.1 - <i>General Parameters</i>	14
3.3.2 - <i>Creating a Profile</i>	15
3.3.3 - <i>Deleting a Profile</i>	19
3.3.4 - <i>Copying a Profile</i>	19
4 - LAUNCHING AXMENU	20
4.1 - LAUNCHING BY THE TERMINAL.....	21
4.2 - LAUNCHING THROUGH THE WINDOWS USER PROFILE	22
4.3 - ADVANCED SETTINGS.....	23
5 - WINDOWS SECURITY	24
5.1 - CUSTOMIZING THE CTRL-ALT-DEL FUNCTION	25
5.1.2 - <i>At the Windows Server Level</i>	26
5.1.2 - <i>At the Axel Terminal Level</i>	26

**- 1 -
INTRODUCTION**

This chapter introduces the basic functionality of the AxMenu software.

The AxMenu software quickly and easily 'publishes' applications to the users of Axel terminals.

1.1 - PRINCIPLE FUNCTIONS

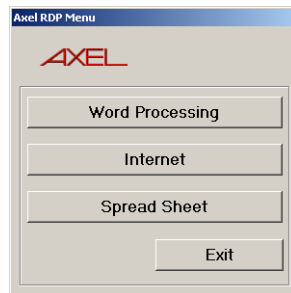
RDP and ICA give the user access to a standard Windows desktop, but this may provide too much freedom for users to access the Windows operating system or applications they are not meant to access. They may also be able to change set-up and configuration parameters.

AxMenu allow users access only to applications the administrator has authorized.

1.2 - USER ENVIRONMENT

The administrator creates a profile for each user which sets the appearance of the screen (Menu, Tool-bar or Desktop) and applications available.

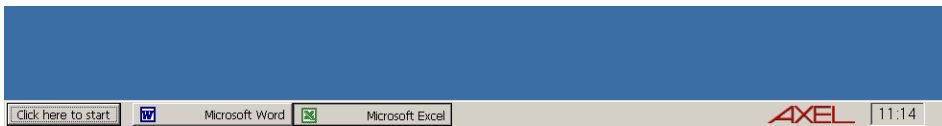
Example of 'Menu': the menu is displayed in the centre of the screen.



Example of Toolbar: the tool-bar displayed along the top of the screen



Example of Desktop: the tool-bar is displayed at the bottom of the screen



1.3 - LAUNCHING AXMENU

The AxMenu software is based the terminal's ability to automatically execute a program on connection to the server.

AxMenu can be launched automatically on connection in one of two ways:

- Through the terminal's ability to automatically launch a program on connection. (Set-up within the terminal).
- Through the user's profile. (Set-up within Windows).

In both cases after the user has been authenticated by the standard Windows logon procedure, the terminal immediately runs the AxMenu software, setting the users environment for that specific user or group.

1.4 - WORKING WITH AXMENU...

The rest of this manual is composed of:

- Installation / Removal of AxMenu,
- Configuration of AxMenu,
- Configuration of the Terminal,
- Windows security issues.

**- 2 -
INSTALLATION / REMOVAL
OF AXMENU**

This chapter gives details of installation and removal procedures.

2.1 - PREREQUISITS

AxMenu is certified for Windows Server 2000 and 2003.

2.2 - UPDATES

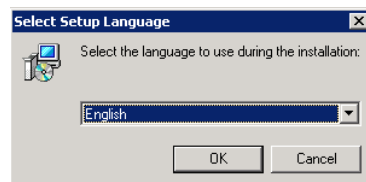
In the event of updating AxMenu, the previous version **MUST** be removed before installing later version. (See chapter 2.4)

2.3 - INSTALLATION

Copy and decompress the file 'AxMenu.zip'.

To start the installation, double click on the file 'AxMenuSetup.exe' and follow the instructions.

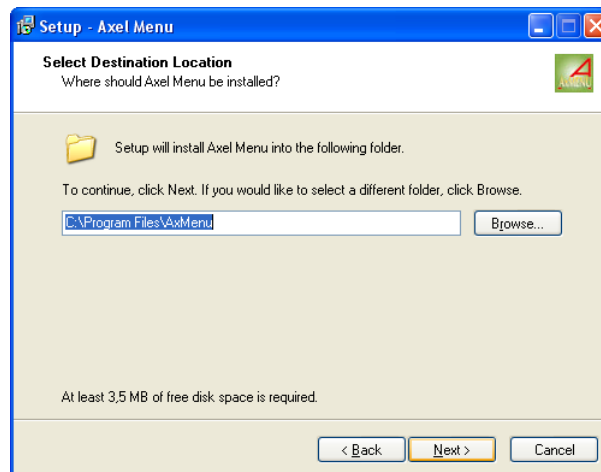
The first window is a language selection box:



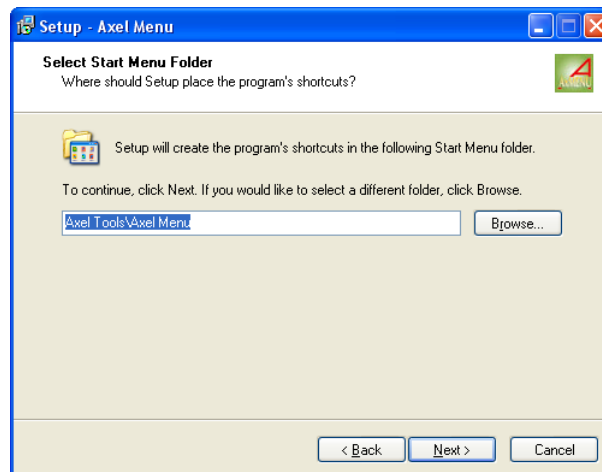
Click on **[OK]** to continue:



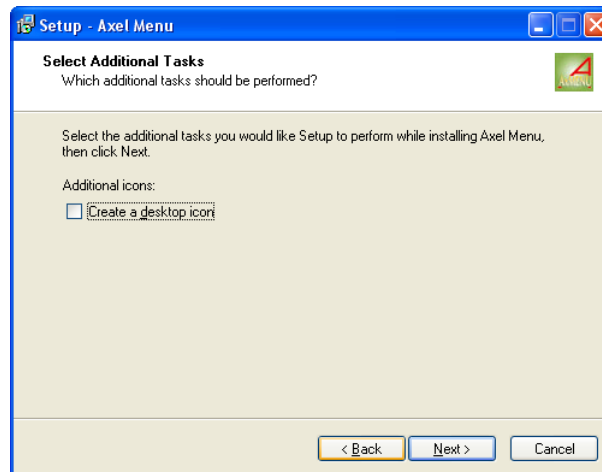
To continue the installation click on **[Next]**. The option to enter a different location for AxMenu is offered:



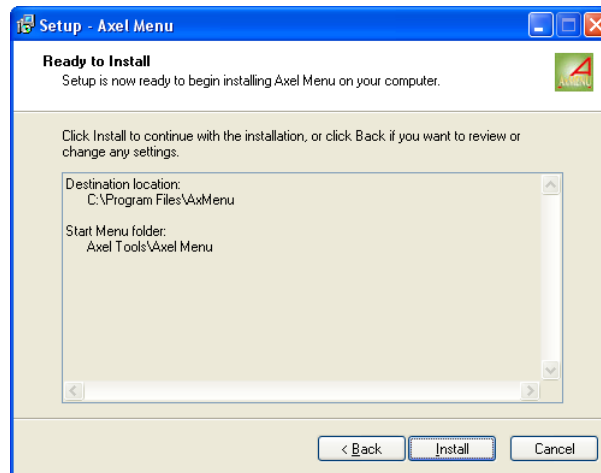
Click on **[Browse]** to select a different location. To continue installation, click on **[Next]**. The following window shows Start Menu folder where AxMenu can be installed:



The default program group is "Axel Tools". Click on **[Next]** to accept and continue the installation:



Click on **[Next]**. The installation summary is displayed:



Click on **[Install]** to start the installation. The installation is completed after the files have finished copying:

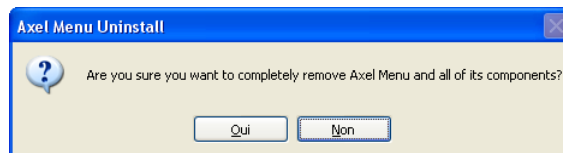


TECHNICAL POINT: Depending on the configuration and version of Windows it may be necessary to update a DLL file. If this is the case download and copy

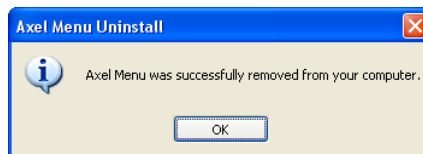
the file MSVBVM60.DLL into the system directory (%SystemRoot%). The file is found under support at <http://www.axel.com>.

2.4 - REMOVAL

To remove AxMenu, select "Uninstall Axel Menu" in the menu **[Start]-[Programs]-[Axel Tools]-[AxelMenu]**:



The following Window confirms AxMenu has been successfully removed:



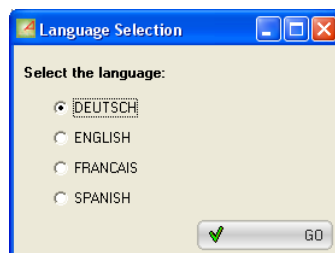
**- 3 -
CONFIGURING
AXMENU**

This chapter describes the configuration of the AxMenu Software.

To launch AxMenu, select **[Start]-[Programs]-[Axel Tools]-[Axel Menu]**.

3.1 - CHOOSING LANGUAGE

Select the required language as prompted:



Note: the languages available depend on the 'LNG' files downloaded with the AxMenu zip package

The language can be changed at a later time (see chapter 3.3.1).

3.2 - ACCESSING THE CONFIGURATOR

3.2.1 - Initial Setup

The first time AxMenu is run the AxMenu configurator is displayed (see chapter 3.3).

3.2.2 - Subsequent Setup

Once configured there are different ways to access the configurator depending on the environment set:

- Menu: Right click on the 'Exit' button.
- Toolbar and Desktop: Right button click on the clock

In both cases a sub-menu will be displayed. Select 'Tunings' to bring up the configurator (see chapter 3.3).

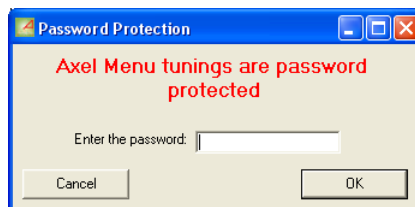
3.2.3 - Technical Point...

If the configuration file is incorrect or does not exist, (maybe the user has not been registered in the configurator) an error message is displayed.

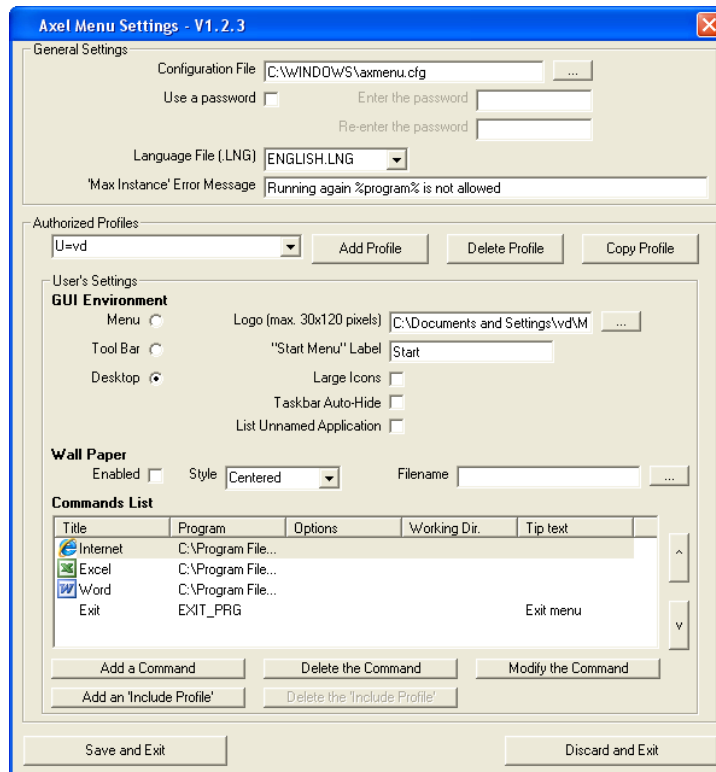
Click on <OK> to access the configurator and verify user details (see chapter 3.3).

3.3 - THE CONFIGURATOR

Access to the configurator may be password protected in which case the following dialog box is displayed. (See chapter 3.3.1).



After entering the correct password the configurator console is displayed:



3.3.1 - General Parameters

The General Parameters of AxMenu are:

- **Configuration File:** name and location of the configuration file which contains the users' profiles
- **Use a password:** select and enter a password to enable. You will be prompted to enter the password twice.
- **Max Instance Error Message:** this error message is displayed when a program is run too many times (see Chapter 3.3.2 - section c). This message can be customized. (The %program% variable is the program name.)

Note on security: we strongly recommend setting a password and saving the configuration file in a location where users cannot access.

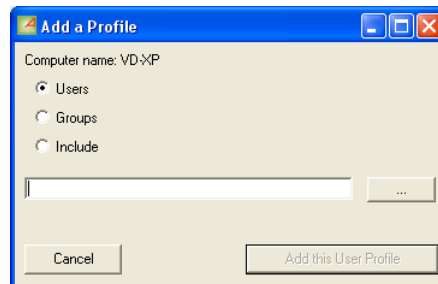
3.3.2 - Creating a Profile

A profile is the AxMenu settings for a given user. The profile is composed of the following:

- Profile identification: a user name or a group name,
- GUI environment: the available types are a menu, a toolbar or a desktop,
- Authorized applications and arguments.

a) Profile ID

Click the "Add a Profile" button. The following dialog box is displayed:



Select first the profile type:

- User: profile for a single user
- Group: profile for a group of users
- Include: this can be considered as a sub-profile. The Include Profile is a list of commands. This profile can be added to a User or a Group Profile. (Only one Include profile can be defined.)

Click the [...] button to select a user name or a group name.

For specific cases, the username or the group name can be manually entered.

For example:

- A list of usernames can be entered separated by commas.
- * can be used as a wildcard to represent all users/groups.

When AxMenu is launched, the profile is selected according to the following rules:

- 1 -A user profile is selected if this profile is equal to the operator username.
- 2 -Else, a group profile is selected if this profile is equal to the operator group name.
- 3 -Else, if existing the wildcard profile (*) is selected.
- 4 -Else, no profile matches. AxMenu is exited.
- 5 -If the selected profile contains the "Include" command, then commands of this Include Profile are included to the selected profile.

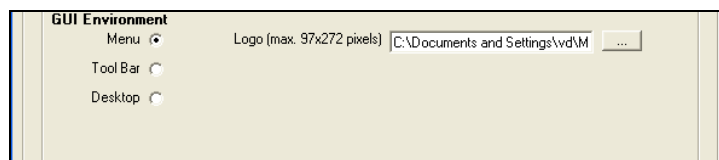
Important: there is no verification that a user created in the configurator exists as a Windows user. Users must be created and able to log onto Windows before they can be added to the AxMenu system.

b) Setting the GUI Environment

Select the environment type for each profile by clicking on the appropriate button. This is a cosmetic choice based on user preference.

All three options provide the same level of functionality and security:

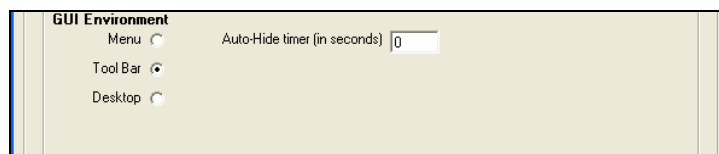
Menu: a menu is displayed in the centre of the screen.



Settings:

- The Axel logo can be replaced (graphics file: bmp, jpeg...).

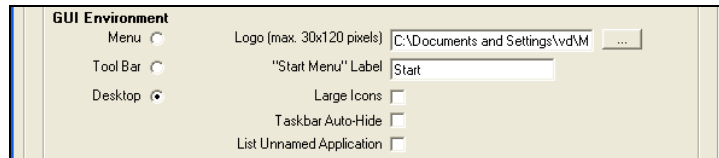
Toolbar: a tool-bar is displayed at the top of the screen.



Settings:

- This tool-bar can be displayed permanently, or automatically hides after the number of seconds set.

Desktop: a tool-bar is displayed at the base of the screen.

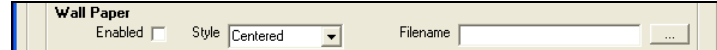


Settings:

- The Axel logo can be replaced (graphics file: bmp, jpeg...).
- The label of the 'Start' button can be modified. (Default "Start")
- Large or small application icons can be specified.
- Taskbar auto-hide capability can be set.
- Unnamed application can be listed in the taskbar

c) Setting the Wallpaper

Select the environment type for each profile by clicking on the appropriate button. This is a cosmetic choice based on user preference.



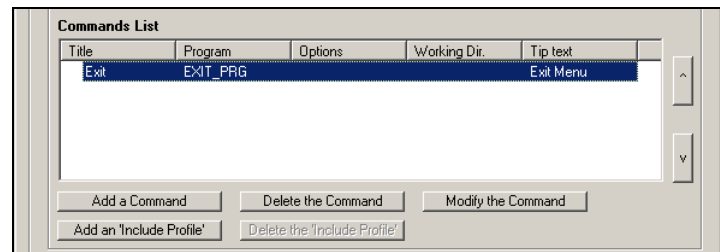
Then select (or not) the use of wallpaper:

- check the "Enabled" box to select wallpaper
- select the wallpaper style: centred, tile or stretched
- select the graphics file (bmp, jpeg...)

d) Selecting Authorized Applications

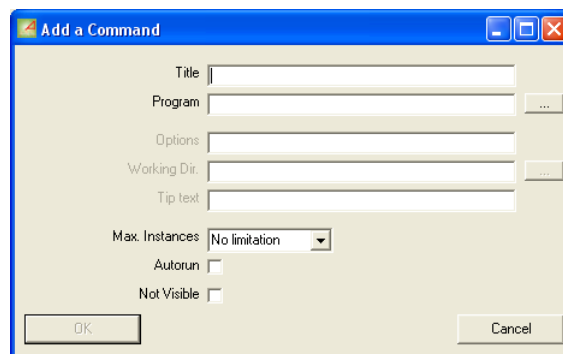
Note: the configurator refers to applications as commands.

On initial creation of a profile the only command authorized is 'Exit'.



The "Modify a Command" button lets the descriptors of the commands to be changed.

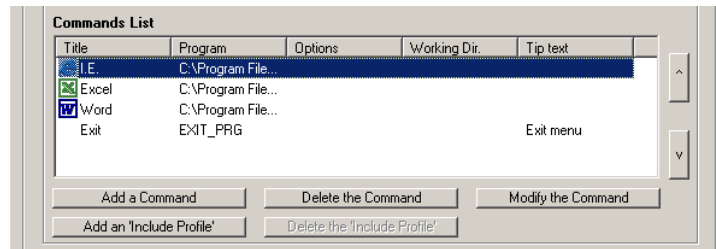
To add a command click on "Add a Command":



The following parameters are offered:

- **Title:** preferred name for the command [example 'INTERNET']
 ☺ : for the desktop environment, use backslash to create sub-menu in the start menu. For example, the two titles 'Office\Word' and 'Office\Excel' will locate both 'Word' and 'Excel' programs in the sub-menu 'Office'.
- **Application:** name and path to the application (if necessary use the "..."
 button to navigate to the application.
 [Example c:\program files\internet explorer\iexplorer.exe]
- **Options:** for parameters required for the command
- **Working Dir.:** path to default directory for the application
- **Tip Text:** help tip displayed if cursor held over the icon.
- **Max Instance:** maximum number of instances a program can run. By default no limitation.
- **Autorun:** check this box to run automatically this program when the desktop is opened.
- **Not Visible:** check this box to run automatically this program when the desktop is opened. The program is not listed in the menu.

Example:



The available buttons are:

- **"Delete the Command"**: removes the current command (Deleting 'Exit' command is not allowed)
- **"Modify the Command"**: allows the current command settings to be altered.
- **"Add an Include Profile"**: add as a single command, the commands of the Include Profile
- **"Delete the Include Profile"**: removes the Include command
- **"v"** and **"^"**: set the order in the menu of the commands.

3.3.3 - Deleting a Profile

Click on the button **[Delete profile]** to remove the current profile from the list.

3.3.4 - Copying a Profile

The **[Copy Profile]** button lets the current profile to be copied to another profile.

Note: a profile "user" can be copied to a profile "group". Or the opposite.

- 4 -
LAUNCHING AXMENU

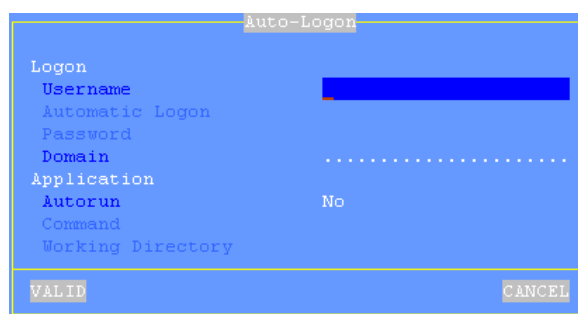
This chapter describes the techniques to launch AxMenu automatically on connecting to the server.

4.1 - LAUNCHING BY THE TERMINAL

The following chapter assumes the terminal is correctly set-up and it is possible for the user to open an RDP connection to the Windows server. For more information on this please consult the *Users Manual*.

Enter the terminal's set-up (<Ctrl><Alt><Esc>) and select the menu **[Configuration]-[Terminal]-[Session X]** (where X is the number of the RDP or ICA session).

Select "Auto-Logon". The dialog box below is displayed:



Parameters required for launching AxMenu:

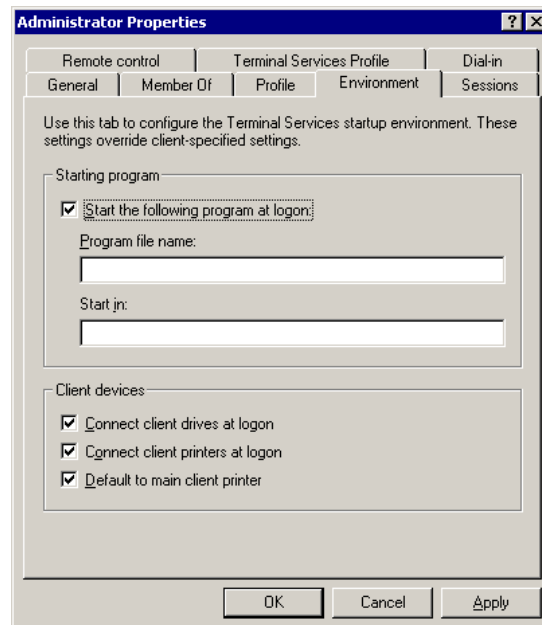
- **Autorun:** set to 'yes'
- **Command:** path and name of AxMenu. By default the AxMenu program is installed in the directory %ProgramFiles%\AxMenu.
Example: %ProgramFiles%\AxMenu\AxMenu.exe

IMPORTANT: We recommend the terminal's set-up is password protected.

4.2 - LAUNCHING THROUGH THE WINDOWS USER PROFILE

The user's standard Windows profile is set to launch AxMenu on logon.

As administrator, launch the program "Computer Management" in 'Administrative Tools'. Select 'Users' and click 'Properties' for the user to modify.



Within 'Environment' tick 'Start the following program at logon' and enter path to AxMenu, default directory %ProgramFiles%\AxMenu.

4.3 - ADVANCED SETTINGS...

It is possible to specify one 'key-name' as an argument when starting AxMenu which takes priority over individual usernames.

Example: "%ProgramFiles%\AxMenu\AxMenu.exe AXELUSERS"

In this case, irregardless of the Windows logon user name, the username 'AXELUSERS' would be passed to AxMenu and the corresponding desktop for AXELUSERS would be used for all users.

- 5 -
WINDOWS SECURITY

The chapter gives information to increase Windows security.

5.1 - CUSTOMIZING THE CTRL-ALT-DEL FUNCTION

The <Ctrl><Alt> keystroke displays a dialog box from where the following actions are permitted:

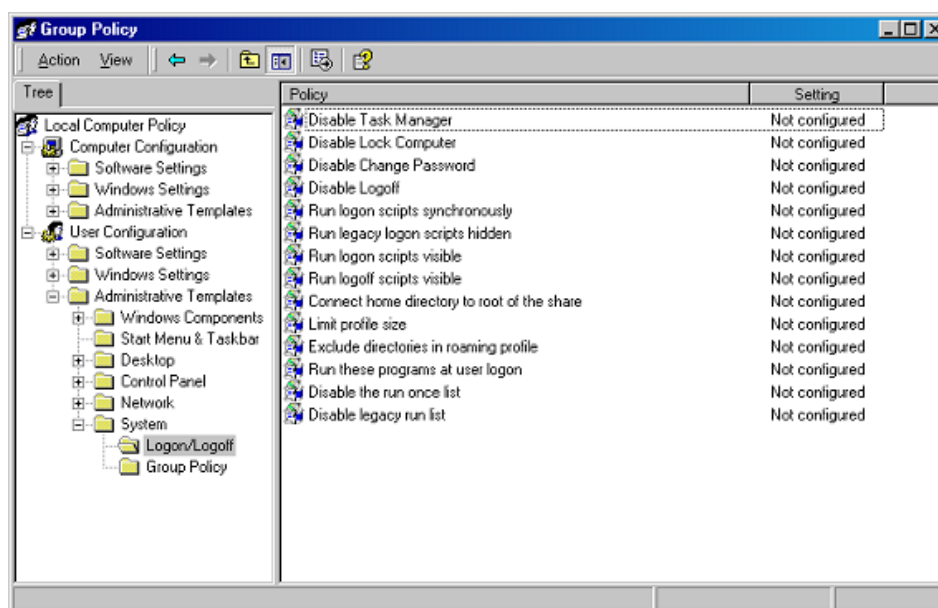
- Locking the computer,
- Closing the session,
- Shutdown the computer,
- Changing the password,
- Running the task Manager.

The task manager offers a loophole in the desktop security integrity of AxMenu as any application can be run through the [File]-[New Task] menu.

This keystroke can be disabled either at the Windows server level or at the Axel Terminal level.

5.1.2 - At the Windows Server Level

To disable the task manager, run **gpedit.msc**. Select **[User Configuration]-[Administrative Templates]-[System]-[Logon/Logoff]**. The following screen is displayed:



Double-click **"Disable the task manager"** then within the displayed box, click **"Enabled"**.

The task manager is no longer available from <Ctrl><Alt>.

Note: the same operation can be applied to other <Ctrl><Alt> actions.

5.1.2 - At the Axel Terminal Level

Enter the terminal's set-up (<Ctrl><Alt><Esc>) and select the menu **[Configuration]-[Terminal]-[Session X]** (where X is the number of the RDP or ICA session).

Select "Additional Parameters". The dialog box below is displayed:

Additional Parameters	
Encryption	Medium Level
Connection Name	axel200009
Mouse Accelerator	No
Server Remote Control	No
<Ctrl><Alt>	Remote
<Scrl Lock> & <Pause>	Enabled
<div> VALID CANCEL </div>	

To disable the keystroke set <Ctrl><Alt> to "local". (In this case the keystroke is interpreted by the terminal itself and allows the terminal to be shutdown.)

AXEL

14 Avenue of the Québec
Bât. K2 - BP 728

91962 Courtabœuf cedex - FRANCE

Tel.: +33.1.69.28.27.27 - Fax: +33.1.69.28.82.04 - Email: info@axel.com